



2026 Darana Raceway General Regulations and Standard Operating Procedures (Revision 5/12/2026)

RADIO STATION

- The radio station for the P.A. system is 88.5 FM.
- TrackTune will be utilized at all events during the 2026 season.

PIT VEHICLES CURFEW/CONTROL

- Speed limit for cars, bikes, quads, carts, etc. traveling in the pit area is 10 miles per hour.
- Pit vehicles MUST be driven in a safe and responsible manner.
- **Pit vehicles MUST be driven by a licensed driver 16 years of age or older.**
- Pit vehicles MUST yield to race vehicles at all times.
- Racers may be held accountable for the conduct of their crew, per the IHRA rulebook.
- Violations of any of these rules may result in disqualification of the competitor or anyone associated with the violator, and/or suspension.

TENTS AND CANOPIES

- Staking is not permitted on any asphalt parking spot.
- We kindly ask for the cooperation of all racers and spectators regarding this. Fines may be administered in the case of a violation.

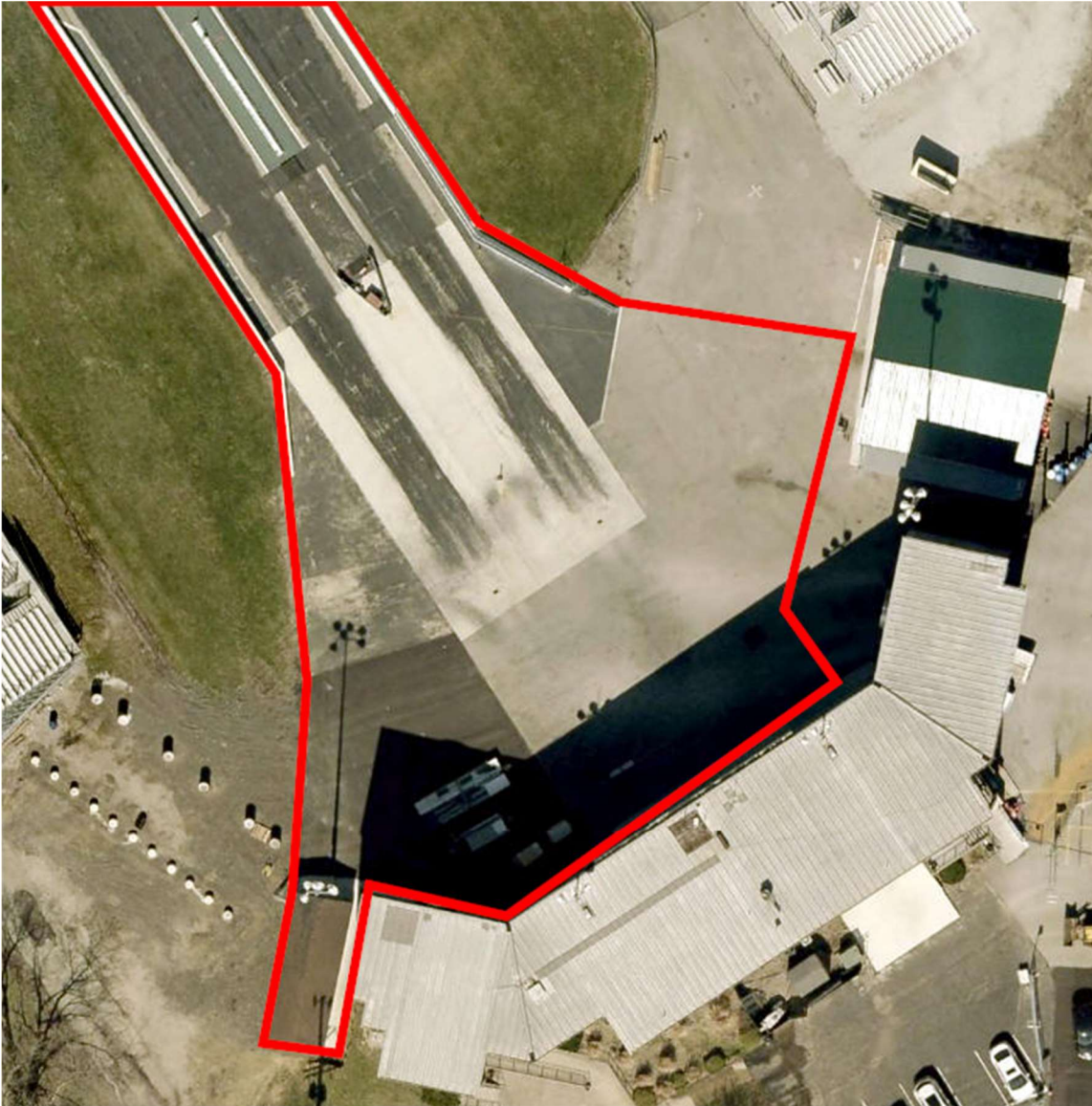
RESTRICTED ACCESS

- The area from the "ready line" in front of the tower to and including the starting line (Fig. 1) is restricted for safety. All visitors to Darana Raceway – Hebron must receive authorization to enter this area.
- Drivers and crew must sign the Release and Waiver of Liability at each event. Signers will be given a Restricted Area wristband, which must be clearly and conspicuously worn for the entire duration of the event. Violations of this rule will not be tolerated.
- Individuals under the age of 16 years old are **not** permitted to enter the restricted area at any time, other than during Jr. Dragster racing sessions.

DARANA

RACEWAY

Hebron, Ohio



restricted area, outlined in red.

Fig. 1: The

TECH INSPECTION

- It is the responsibility of the driver to only enter a vehicle into competition that will pass tech inspection for the class into which it was entered.
- In the event that a car does not meet the safety standards, the racer will be charged the spectator fee for that event, but the racer-only portion of the fee will be refunded.
- Darana Raceway – Hebron is an IHRA member track, and all racers are expected to follow IHRA rules.
- Darana Raceway – Hebron reserves the right to inspect a racer's vehicle at any time, for any reason.



HELMET

- Drivers of all cars running 13.99 or quicker at the 1/4 mile and/or 8.99 or quicker at the 1/8 mile are required to wear a helmet with a Snell 2015 or newer certification. Please refer to the IHRA Rulebook or a Darana Raceway official for questions regarding legal helmets.

CLOTHING

- All drivers and passengers are required to wear full-length pants, a short- or long-sleeved shirt, closed-toed shoes, and socks. **Shorts, tank tops, open-toe/heel shoes, and sandals are prohibited.**

TAIL LIGHTS

- All vehicles must have a working light on the rear of the vehicle, which must be turned on for evening racing.
- Tail light(s) must be sufficiently bright so as to be clearly visible from the starting line to the track turn-off.
- Racers whose tail lights are deemed to provide insufficient visibility will be given one warning. Repeated failure to comply may result in disqualification.

ANTIFREEZE

- Vehicles running 11.50 or quicker are not permitted to have coolant/antifreeze in the cooling system.

DIAL-INS

- **Must be visible from the tower**, placed on **both** the driver-side window and rear windshield.
- Once you reach the ready line under the tower, your dial-in can no longer be changed without approval from the Race Director.
- Check the dial-in board in the waterbox, and the scoreboards when at the starting line **prior to staging**.
- In classes that utilize Blind Cross (CrossTalk), please be sure to check that your opponent's dial-in is correct in addition to your own.
- **It is the racer's responsibility to ensure that their dial-in is correct before their run. There will be absolutely no re-runs due to incorrect dial-ins.**

CAR NUMBERS

- Must be displayed on both side windows, the front windshield, and the rear windshield.

DRIVERS

- All drivers are required to have a valid driver's license, unless otherwise stated in the rules for an event/class.
- All drivers under the age of 18 must have a parent permission form on file, which must be signed by a parent/guardian prior to passing tech inspection. Minor waiver forms are available in Race Control (Suite 103).



BREAKAGE

- If your car breaks prior to making any runs in time trials **or** eliminations, you will receive a cash refund equal to the full value of the racer entry paid for the event, minus the spectator admission fee. If you wish to receive points for the day, there will be no credit issued.
- If your car breaks prior to the 1st round of eliminations, you will receive entry credit for the amount of the tech card minus the spectator admission fee for the day. If you wish to receive points for the day, there will be no credit issued.
- If your car breaks during eliminations, you may switch cars as long as the new vehicle is not in competition in **ANY** class.

TIME TRIALS/QUALIFYING

- Lanes 1, 3, and 5 will be designated as the left lane.
- Lanes 2, 4, and 6 will be designated as the right lane.
- There will be no singles in time trials/qualifying unless there is an odd number of racers or the single run has been approved by the Race Director.
- **NO CHANGING LANES PAST THE CROSSWALK IN THE STAGING LANES.**
- If you wish to run a certain lane, it is suggested to make sure you get to the lanes early.
- **IF YOU MAKE AN EXTRA TIME TRIAL/QUALIFYING RUN IN A ET SERIES CLASS, THAT RUN WILL COUNT AS A FIRST ROUND LOSS AND YOU WILL BE ABLE TO BUY BACK INTO THE RESPECTIVE CLASS FOR SECOND ROUND.**

ELIMINATIONS RANDOM PAIRING

- Racers will be called to their respective lanes.
- Racers in lanes 1, 3, and 5 will be assigned the left lane.
- Racers in lanes 2, 4, and 6 will be assigned the right lane.
- The head of staging will pull one left lane and one right lane to completion, then pull the next left lane and right lane to completion.
- The pulling order of the staging lanes will be randomly decided. Lane 1 may be paired with lane 2 in round 1, and with lane 6 in round 2, or any other combination of lanes, provided that a left-designated lane is paired with a right-designated lane.
- Racers will be pulled front to back if the racers remaining in the lanes are all in lanes designated for the same side of the track (i.e. all remaining racers are in lanes 1, 3, and 5, which are designated as the left lane).
- **NO CHANGING LANES PAST THE CROSSWALK IN THE STAGING LANES.**
- Racers are considered paired with one another whenever the head of staging has pointed at both racers. Once paired, if one racer is unable to compete for any reason, the other racer will receive a competition bye run. The racer able to make the call must stage under their own power as instructed by the Race Director.
- If you wish to run a certain lane, it is suggested to make sure you get to the lanes early.



SINGLE RUNS

- In Super Pro, Pro, and Sportsman, 1st round bye runs will be random. After the 1st round of eliminations in these classes, the bye run in future non-laddered rounds will be assigned to the racer with the best winning reaction time. In the event of a tie, best winning package will be used as the tie-breaker.
- The bye run is dependent on an odd number of entries in the class. In rounds with an even number of competitors, there will be no bye run.
- A racer is eligible for only one bye run until all remaining competitors have received a bye run in competition. This limit applies only to “true bye runs”, and not to competition/broke singles.

LADDERS

- Jr. 1, Jr. 2, and Jr. 3 will be placed on a sportsman ladder at 8 cars or less.
- Super Pro, Pro, Sportsman, and Motorcycle will be placed on a pro ladder when there are 8 or less entries remaining in competition. Ladders in these classes will be based on the reaction times of the previous round winners.
- High School and Teen Championship will utilize a sportsman ladder.
- Classes not listed here will be based on specific class rules.

LANE CHOICE

- Determined by reaction time on all laddered classes and rounds.
- Non-laddered classes and rounds will be assigned lanes by staging staff.

RE-RUNS

- In the event that a re-run is deemed necessary, drivers may change their dial-ins for the re-run.
- Switching lanes for a re-run is prohibited.
- Failure to re-run will result in a competition single for the other competitor.

COOLDOWN

- Darana Raceway reserves the right to limit the cooldown time to a maximum of 15 minutes between rounds (i.e. 15 minutes from the last car in category crossing the finish line). This rule is per class.

PAYOUTS

- ET Series and Jr. Dragster Series payouts are guaranteed unless otherwise stated.
- Payouts will be available in Guest Services at the end of the event.
- **Payouts must be collected prior to the conclusion of the event weekend.** Failure to claim a payout before this deadline will result in monetary forfeiture.

POINTS

- Racers who are entered in the points will receive 10 points for passing tech and 10 points per round win.
- Event winners will receive 3 points, event runner-ups will receive 2 points, and event semi-finalists will receive 1 point in addition to their round win and tech points.



- **NO** points may be moved from one class to another.
- You must register a number with Darana Raceway if you are participating in the ET Series or Jr. Dragster Series. The cost for this is \$65, payable via the online points sign-up portal.

POINTS TIE-BREAKERS

- In the event of a tie between 2 or more racers in year-end payout classes, the following tie-breakers will be used, in order.
 1. Overall points
 2. Event wins
 3. Runner-up finishes
 4. Semi-final finishes
 5. Least 1st round losses

GOLD CARD POLICY

- Darana Raceway Gold Cards are valid for one racer entry and one spectator.
- Darana Raceway Gold Cards are non-transferable.
- Darana Raceway Gold Cards are valid only for racer entry in the class that they were issued for. Gold Cards are not valid for Test N Tune events.
- Darana Raceway Gold Cards are valid **ONLY** for ET Series events.
- IHRA Summit Gold Cards are only valid for one racer entry in the class they were issued for, plus one spectator.

PASSENGERS

- Passengers are prohibited in eliminations in any points-earning class, with the exception of Teen Championship.

MULTIPLE ENTRY POLICY

- Drivers may enter two ET Series classes with the same vehicle, provided that the vehicle and driver are both legal for both classes.
- No vehicle or driver may be entered in a single class twice.
- It is the driver's sole responsibility to make sure they are in the staging lanes in time to run with their class.
- If you wish to buy multiple entries, you may purchase your second tech card at Guest Services prior to round 1 of eliminations.



ACCUTIME TIMING SYSTEM

- Darana Raceway uses the latest AccuTime timing system. Listed below are some of the most commonly mentioned features.
 1. **Blue Bulb:** At the top of the tree between the stage bulbs, you'll notice a single blue bulb. Please note that with AccuTime, this is **not** an indicator for deep staging! **When this bulb is flashing**, it indicates that car numbers are loaded in the system, meaning **it is safe to stage if the starter waves you forward**. Please do not stage before the starter gives the signal, as this bulb is **NOT** an indicator of down-track safety! When the bulb lights solid, the starter has flipped the switch and the start sequence has been handed over to the timing system. **If the blue bulb is not flashing, it is not safe to stage! Running while the blue bulb is not lit will cause the system to "miss" your run, and it will not be counted!**
 2. **Courtesy Staging:** Out of courtesy to your fellow competitor, we encourage Courtesy Staging. As you stage your car, please pull forward until the first light (pre-stage) comes on. At that point, you should wait until the car in the opposite lane has lit their pre-stage bulb before staging. PLEASE NOTE: The system registers a car as staged if the stage light is on for at least 0.6 seconds. Therefore, please be cautious when "bumping" in the lights.
 3. **Deep Staging:** Some drivers prefer to pull into the beams so far that they turn off the pre-stage bulb while keeping the stage bulb lit. This procedure is illegal in certain IHRA classes (see IHRA Rulebook). If you choose to deep stage, you are doing so at your own risk. You do **not** need to write "DEEP" on your car or otherwise signal to track staff that you intend to deep stage. The starter is under no obligation to wait for a driver to deep stage.
 4. **AutoStart:** The AutoStart system will automatically start the tree at a random pace within a given window. When both drivers are pre-staged, the starter will flip the AutoStart switch. In most classes, when one driver stages, the other will have 10 seconds to stage their car before the AccuTime system "times them out" (also referred to as "burndown"), disqualifying them. Once both cars have staged for 0.6 seconds, the tree will come on between 0.6 and 1.4 (full tree = 0.6 to 1.1) seconds later, depending on the class. The system will vary the start sequence by randomly adding up to 0.2 seconds, preventing racers from "guessing" when the tree will come on. The starter is able to stop the sequence if necessary, and can activate the tree themselves by "overriding" if that is required.
 5. **Blind Cross:** Classes utilizing Blind Cross (commonly referred to as CrossTalk, the CompuLink equivalent) allow the tree to be fully shielded while still allowing for racers in Super Pro, Super Pro Motorcycle, Super 32, Top Sportsman, and Top Dragster classes to leave off their opponent's tree. Blind Cross functions by lighting the top amber bulb in both lanes at the exact same time, allowing both cars a clean "hit" on the tree. The slower car's tree will continue counting down as normal. The quicker car's top amber bulb will remain lit for the duration of the handicap, plus the normal 0.5 seconds, before counting down the second and third bulbs as normal. The driver of the faster car in a pair may disable Blind Cross for the run by including an "N" behind their dial-in (i.e. 5.00N). A negative symbol ("-") will appear in front of the dial-in displayed on the scoreboard (i.e. -5.00) to indicate that Blind Cross is disabled in this way. If you have any questions or do not understand how Blind Cross works, please consult with a Darana Raceway official.
 6. **Worst Red:** Similar to Compulink's TruSTART system, the AccuTime "Worst Red" system is designed so that in the event that both racers in a pair red-light during



eliminations, the win will be given to the racer who is closer to green. This system will be enabled at all ET Series, Jr. Dragster Series, and Darana Raceway bracket events.

- 7. Dial-In Boards:** Darana Raceway – Hebron staff will make an effort to provide dial-in boards for racers in the waterbox, when applicable. These dial-in boards are a courtesy and not considered a vital part of the timing system. It is the responsibility of the racer to verify that the dial-in displayed on the ¼ mile scoreboards prior to the race is valid and accurate before staging. The act of staging implies that the racer accepts the dial-in shown and is ready to start the race. No re-runs will be given for racers who run on the incorrect dial-in.

ALL RULES, INTERPRETATIONS OF THE RULES, QUESTIONS, AND PROTESTS ARE LEFT UP TO THE FINAL DISCRETION OF THE RACE DIRECTOR. IF A SITUATION WARRANTS ACTION IN ANY EVENT, THE RACE DIRECTOR HAS THE FINAL WORD.